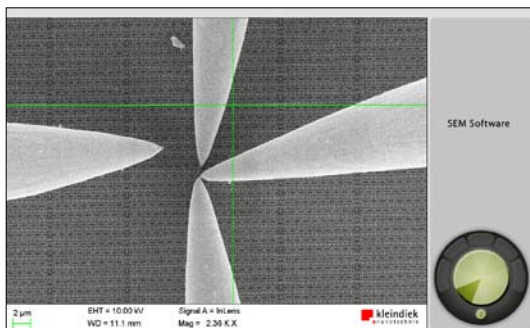


iProbe

The iProbe software provides the most flexible and intuitive way to control up to four MM3A-EM micromanipulators.



iProbe allows three-dimensional control via two-handed operation – your mouse for X and Y movements and a jog dial for Z movements. The probe tip becomes your mouse pointer which gives you a familiar and intuitive feeling, even including dynamic movement response.



iProbe allows precision control of your manipulators through six orders of magnitude.

The iProbe Setup Wizard allows you to transport the various mounting possibilities for your manipulators directly into the software, so that you retain setup flexibility but never need to stop and think about which manipulator you want to move and in which direction.

We recommend that iProbe is installed on your SEM PC, but it can also be installed on the support PC or a laptop, if available. iProbe has a screen real estate requirement of only 230 x 230 pixels.

iProbe updates are free of charge.

Requirements

- 3 USB ports
- Microsoft Windows 2000 or XP

Further information

- Contact us at info@nanotechnik.com
- Find your local agent at www.nanotechnik.com

