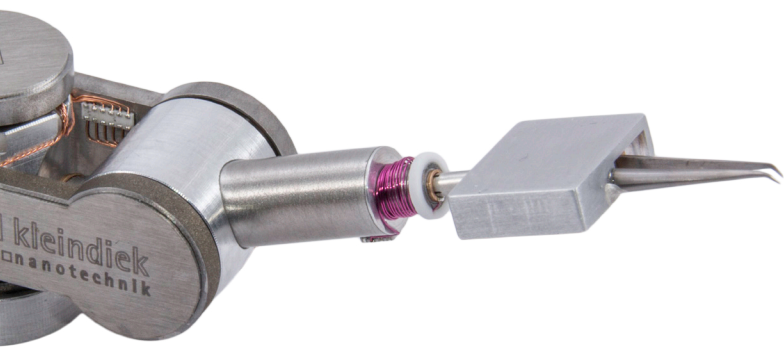


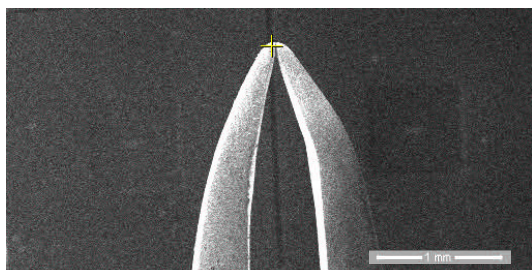
MTW-EM Microtweezer

The MTW-EM is a microtweezer plug-in for the MM3A-EM micromanipulator. It enhances your system by providing a high-resolution gripping solution for transport and assembly of small objects.



The microtweezer's arms are fashioned from high-precision tweezers. One side of the tweezer is mounted to a piezo-motor, allowing a step size of 0.25 nm..

The plug-in tool can be quickly and easily fitted to your existing MM3A-EM micromanipulator.



Applications

- Micromanipulation
- Pick & Place small particles

Technical specifications

- Total length 26 mm
- Tip length 14 mm
- Height 4 mm
- Resolution 0.25 nm
- Maximum span range 3 mm
- Temperature range 273 K to 353 K
- Lowest pressure 10^{-7} mbar

Further information

- Contact us at info@kleindiek.com
- Find your local agent at www.kleindiek.com

